

NASPGHAN
FOUNDATION

ANNUAL REPORT 2019



NASPGHAN Foundation for Children's Digestive Health & Nutrition Mission Statement

The NASPGHAN Foundation
funds and supports the
research and education missions
of NASPGHAN in order to
enhance the health and
well-being of children with
gastrointestinal, liver, pancreas
and nutritional disorders.

The NASPGHAN Foundation is organized exclusively for charitable, scientific, and educational purposes as defined in section 501(c)(3) of the Internal Revenue Code of 1986 and receives an annual audit. Copies of the Federal Form 990 Tax Return for organizations exempt from tax are open for public inspection and can be obtained by contacting the National Office.

NASPGHAN Foundation for Children's Digestive Health & Nutrition
714 N. Bethlehem Pike, Suite 300, Ambler, PA 19002
Phone: 215-641-9800
www.NASPGHANFoundation.org

MESSAGE FROM THE PRESIDENT

Dear Colleagues and Friends:

It is time again to present the biennial report of the NASPGHAN Foundation. The report has two important goals: to provide transparency on the finances of the Foundation, and to recount the activities and accomplishments of the Foundation over the last two years. I hope you agree that we've hit the mark on both accounts.

The mission of the Foundation remains to support cutting-edge research and educational experiences for our membership, our patients and their families. On the research front, we provide funding opportunities for basic, clinical, and quality-improvement research for NASPGHAN, CPNP and APGNN members across the spectrum of career experience; from young, to mid-career, to established investigators. This support keeps NASPGHAN an important contributor to the advancement in our field and is an essential role of the Foundation. But equally important, are the educational and patient-oriented activities supported by the Foundation, which serve to create new learning experiences, disseminate knowledge to front line health care providers, and directly help our patients navigate the health care landscape. As detailed in this report, we have had a very productive two years.

As well, it is always a thrill to acknowledge the recipients of our grants and the winners of awards that recognize achievements in research and educational endeavors. This report will highlight our winners, and I would like to announce the expansion of these awards in 2019 to include the newly established Amin Tjota Award for the outstanding abstract in pancreatic research.

In order to do these things, it truly "takes a village". It starts with the incredible group of individuals that volunteer their time and efforts to the Foundation, including the Executive Committee, Board of Directors, Advisory Board, and the many leaders and contributors to our grant review process, and our many educational and patient-oriented campaign initiatives. I want to thank all our many Corporate Partners who support educational programs and career advancing opportunities for trainees and junior faculty. I'd also like to acknowledge the Crohn's and Colitis Foundation for its partnership with the Foundation to support a young investigator in the field of pediatric IBD research as well as patient education materials for children with inflammatory bowel disease.

Most of all, I want to thank the membership and those of affiliate organizations that support the Foundation through charitable donations. Your generosity is deeply appreciated and I assure you, we will continue to work tirelessly to promote the mission of your Foundation.



Barry K. Wershil, MD

President, NASPGHAN Foundation

Ann & Robert H. Lurie Children's Hospital of Chicago Feinberg School of Medicine at Northwestern University



Barry K. Wershil MD

Officers

Past President:

John Barnard, MD

President:

Barry K. Wershil MD

President Elect:

Menno Verhave, MD

Secretary Treasurer

Ann Scheimann MD, MBA

Board of Directors:

Praveen Goday, MBBS
Nicola Jones, MD, PhD
James Heubi, MD
Jeannie Huang, MD, MPH
Jenifer Lightdale, MD, MPH
Marjorie Merrick
Karen Murray, MD
Vicky Ng, MD
Patricia Robuck, PhD
Joel Rosh, MD

Advisory Board:

Robert Baldassano, MD
Amy Donegan, RN, MS, APN
Alessio Fasano, MD
Benjamin Gold, MD
Glenn Furuta, MD
Maria Oliva Hemker, MD
Sarah Kemme, MD
Rohit Kohli, MD
Marialena Mouzaki, MD
Amber Smith, MBA, RD, CD
Allison Ta, MD
Miriam Vos, MD, MSPH

NASPGHAN
FOUNDATION



INDEPENDENT AUDITOR'S REPORT

Board of Directors of The Naspghan Foundation Ambler, Pennsylvania

We have audited the accompanying financial statements of The NASPGHAN Foundation (a nonprofit organization and subsidiary of North American Society for Pediatric Gastroenterology, Hepatology and Nutrition), which comprise the statement of financial position as of December 31, 2018, and the related statements of activities, functional expenses, and cash flows for the year then ended, and the related notes to the financial statements.

Management's Responsibility for the Financial Statements

Management is responsible for the preparation and fair presentation of these financial statements in accordance with U.S. generally accepted accounting principles; this includes the design, implementation and maintenance of internal control relevant to the preparation and fair presentation of financial statements that are free from material misstatement, whether due to fraud or error.

Auditor's Responsibility

Our responsibility is to express an opinion on these financial statements based on our audit. We conducted our audit in accordance with U.S. generally accepted auditing standards. Those standards require that we plan and perform the audit to obtain reasonable assurance about whether the financial statements are free from material misstatement.

An audit involves performing procedures to obtain audit evidence about the amounts and disclosures in the financial statements. The procedures selected depend on the auditor's judgment, including the assessment of the risks of material misstatement of the financial statements, whether due to fraud or error. In making those risk assessments, the auditor considers internal control relevant to the entity's preparation and fair presentation of the financial statements in order to design audit procedures that are appropriate in the circumstances, but not for the purpose of expressing an opinion on the effectiveness of the entity's internal control. Accordingly, we express no such opinion. An audit also includes evaluating the appropriateness of accounting policies used and the reasonableness of significant accounting estimates made by management, as well as evaluating the overall presentation of the financial statements.

We believe that the audit evidence we have obtained is sufficient and appropriate to provide a basis for our audit opinion.

Opinion

In our opinion, the financial statements referred to above present fairly, in all material respects, the financial position of The NASPGHAN Foundation as of December 31, 2018, and the changes in its net assets and its cash flows for the year then ended in accordance with U.S. generally accepted accounting principles.

Report on Summarized Comparative Information

We have previously audited The NASPGHAN Foundation's 2017 financial statements, and we expressed an unmodified audit opinion on those audited financial statements in our report dated July 11, 2018. In our opinion, the summarized comparative information presented herein as of and for the year ended December 31, 2017 is consistent, in all material respects, with the audited financial statements from which it has been derived.

BBD, LLP

Philadelphia, Pennsylvania

July 19, 2019



Education

The Foundation supports the educational mission of NASPGHAN through a diverse portfolio of professional and public education initiatives. Topic areas are reflux and GERD, inflammatory bowel disease, celiac disease and gluten-related disorders, constipation, eosinophilic esophagitis, nutrition, endoscopy, and nonalcoholic fatty liver disease in children, adolescents and young adults. The Foundation's goal is to educate medical professionals and the public, and to support the development of new research in these areas. The primary objectives are to improve the quality of life and to change pediatric and adult health outcomes by early detection and intervention.

GIKids is the patient outreach and education effort of NASPGHAN. With GIKids, NASPGHAN and the Foundation are working to reach out directly to families, kids and teens who live with digestive conditions to provide them with the information they need to:

- understand and improve their digestive health
- work with their health care providers
- live a more independent life
- understand what works in plain language

NEW EDUCATIONAL RESOURCES AVAILABLE IN 2018-2019 INCLUDE:

"New Frontiers in Intestinal Failure: The Latest and Greatest"

This webinar fulfills the medical professional needs and gaps in the management and treatment of intestinal failure. Topics covered include the growing innovations of alternative lipids, potential use of TED in children, and the effect that these interventions have had on the field of intestinal rehabilitation and transplant.

Support provided by an educational grant from Takeda Pharmaceuticals America, Inc.

NAFLD Guidelines Summary

The NASPGHAN Foundation developed a NAFLD Guideline Summary for the Diagnosis and Treatment of Nonalcoholic Fatty Liver Disease in Children: Recommendations from the Expert Committee on NAFLD (ECON) and the North American Society of Pediatric Gastroenterology, Hepatology and Nutrition (NASPGHAN) was published in the *Journal of Pediatric Gastroenterology and Nutrition* - Volume 64, Number 2, February, 2017.

The information in the guideline summary is a "condensed" version highlighting key areas for the practitioner and is designed, to be useful in a real time practice setting.

*Support provided by an educational grant from
Alexion Pharmaceuticals, Inc.*

NAFLD Slide Set

This slide-set provides an update on screening, diagnosis, and effective treatment options for pediatric NAFLD to help learners implement optimal strategies into their clinical practice. The slide set is based on the NAFLD Guideline

*Support provided by an educational grant from
Alexion Pharmaceuticals, Inc.*

GERD Guideline Summary

The NASPGHAN Foundation has developed a summary of Algorithm 1, Management of the Symptomatic Infant, published in the Pediatric Gastroesophageal Reflux Clinical Practice Guidelines: Joint Recommendations of the North American Society for Pediatric Gastroenterology, Hepatology, and Nutrition and the European Society for Pediatric Gastroenterology, Hepatology, and Nutrition. Journal of Pediatric Gastroenterology and Nutrition - Volume 66, Issue 3, March 2018.

Two versions have been created and can be accessed on the NASPGHAN website. One was developed to assist primary care providers, and dietitians; and the second version for pediatric gastroenterologists and GI dietitians. Both summarize the guideline's approach to infants with frequent regurgitation or vomiting suspected of GERD.

*Support provided by an educational grant from
Abbott Nutrition*

NASPGHAN Nutrition University (N²U)

This course is designed to provide specialized nutrition education in areas associated with the practice of pediatric gastroenterology and nutrition to 3rd year fellows, junior faculty and dietitians. It targets two groups: candidates who received minimal nutrition education during their fellowship or whom plan to pursue pediatric nutrition as their career focus. The course includes "hot" topics discussions and a nutrition Jeopardy competition on Friday. On Saturday, a series of challenging cases are presented in a small group setting.

Topics covered include

- Diagnosis of pediatric malnutrition
- Failure to thrive and feeding disorders
- Micronutrient deficiencies
- Critical care nutrition
- Short bowel syndrome/malabsorption
- Obesity
- Nutritional management of cystic fibrosis
- Food allergy and eosinophilic esophagitis.
- Nutritional therapy in inflammatory bowel disease
- Nutrition support in chronic liver disease

*Support provided by an educational grant from
Nutricia North America*

COMING IN 2020

EoE Online Education Program

NASPGHAN and CEGIR (Consortium of Eosinophilic Gastrointestinal Researchers) are developing a web based education series on Eosinophilic Esophagitis. The program consists of 6 modules with 26 presentations. After participating in the on-line lectures the attendees will be able to:

1. Understand the pathophysiology of EoE
2. Know the clinical presentations and initial evaluation of a patient with EoE including the differential diagnosis of EoE
3. Understand the therapeutic options for treatment of EoE and how to monitor a patient after treatment

*Support provided by an educational grant from
Takeda Pharmaceuticals America, Inc.*

NASPGHAN Foundation/NASPGHAN Curriculum for Pediatric Gastroenterology Fellows

This didactic curricula with self- learning modules will covers topics including: nutritional assessment, basic nutritional physiology, micronutrients, feeding, malnutrition, nutritional support for GI and non-GI conditions, obesity, and macronutrients/formula composition. The Course is designed for use in pediatric GI fellowship training programs.

*Support provided by an educational grant from
Nestlé Health Sciences and Nestlé Infant Nutrition*

PATIENTS & FAMILIES

Updated Constipation Materials

(Available on GIKids.org)

New constipation patient materials, are now available on the GIKids.org website. New patient handouts cover the following topics: Treatment and Management, Nutrition, Fecal Soiling, Toilet Training Tips, Fluid & Fiber.

These materials will soon be made available in French and Spanish.

*Support provided by an educational grant from the
Allergan Foundation*

The Poo in You

Still a favorite among our members, this interactive animated video explains what causes accidents, why they happen so often, and how we can treat the problem. Watch the video, with over 3.8 million views developed by APGNN member Becky Kendall, NP, Children's Hospital Colorado.

*Partial funding was provided through the
NASPGHAN Foundation Clinical Innovations Grant*

Doc4Me

A significant proportion of inflammatory bowel disease (IBD) patients present in childhood with up to one third of patients presenting before the age of 20 years. As a result, many inflammatory bowel disease patients must undergo the transition process, where their care is transferred from a pediatric-centered service to an adult-care service.

The Doc4me app helps adolescents and young adults with inflammatory bowel disease find a doctor who treats adults with inflammatory bowel disease in a specific area.

Doc4me also helps young people get ready for their medical visit with their new doctor by knowing what to bring and how to prepare.

*Support provided by educational grants from the AbbVie and
Takeda Pharmaceuticals America, Inc.*



Patient Education & Resources GiKids.org



Your patients can reach us on our website (GIKids.org) or follow us on:

Facebook: GIKids <https://www.facebook.com/GIKidsOrg>

Twitter: @GIKidsOrg <http://twitter.com/gikidsorg>



Thank You to our 2018-2019 Volunteers

Ruba Abdelhadi MD, CNSC
J. Pablo Abonia MD
Seema Aceves MD, PhD
Lindsey Albenberg DO
Jeffrey Alexander MD
Anushree Algotar MD, MPH
Arik Alper MD
Nadia Ameen MD
Ronen Arnon MD
Nicoleta Arva MD, PhD
Jaime Belkind-Gerson MD
Wendy Book MD
Alexandra Carey MD
Carolina Cerezo MD, FAAP
Shelly Chatterjee Choudhury MD
Anupama Chawla MD, NBPNS, DCH
Edaire Cheng MD
Sam Cheng MD, PhD
Ankur Chugh MD
Bruno Chumpitazi MD
Antonella Cianferoni MD, PhD
Valeria Cohran MD, MS
Margaret Collins MD
Maire Conrad MD
Jennifer Crouse RD
Amy DeFelice MD
Evan Dellon MD, MPH
Edwin deZoeten MD, PhD
Amy Donegan RN, MS, APN
Jennifer Dotson MD, MPH
Khalil El-Chammas MD, MS
Wael El-Matary Gary Falk MD, MS
Lauren Fiechtner MD, MPH
Kerri Ann Fournier BSN
Patricia Fulkerson MD, PhD
Glenn Furuta MD
Vicki Gainsberg RD
Grace Gathungu MD
Praveen Goday MBBS, CNSC
Nirmala Gonsalves MD
Anthony Guerrero MD, PhD
Sandeep Gupta MD

Rishi Gupta MD
Kyndal Hettich RD, CSP, CD
James Heubi MD
Ikuo Hirano MD
Jon Hubbard MD, PhD
Aamer Imdad MBBS
Ajay Jain MD
Candi Jump DO
Catherine Karls MS, RD, CD, CNSC
Kara Kliewer PhD, RD
Samuel Kocoshis MD
Rohit Kohli MBBS, MS
Katja Kovacic MD
Jacob Kurowski MD
Catherine Larson-Nath MD, CNSC
Dale Lee MD, MSCE
Maureen Leonard MD
John Leung MD
Steven Lichtman MD
Kathleen Loomes MD
Peter Lu MD
Cara Mack MD
Valérie Marchand MD
Jonathan Markowitz MD
Goldie Markowitz PNP
Victoria Martin MD
Maria Mascarenhas MBBS
Joanne Carol Masterson PhD
Lauren Matschull MBA, RD, CD, CNSC
Alisha Mavis MD
Barb McElhanon MD
Calies Menard-Katcher MD
Russell Merritt MD, PhD
Phillip Minar MD
Sean Moore MD, MS
Marialena Mouzaki MD
Amanda Muir MD
Vince Mukkada MD
Jennifer Panganiban MD
Dhiren Patel MD
Rebecca Pipkorn RD, CD, CNSD
John Pohl MD

Eileen Potter RD
Shervin Rabizadeh MD
J Marc Rhoads MD
Rachel Rosen MD
Marc Rothenberg MD, PhD
Jeffrey Rudolph MD, PhD
Shehzad Saeed MD
Senthilkumar Sankararaman MD
Jarrad Scarlett MD, PhD
Ann Scheimann MD, MBA
Alain Schoepfer MD
Sally Schwartz RD, CSP, LDN
Melissa Scott RN BSN
Timothy Sentongo MD, PhD
Wednesday Sevilla MD, MPH, CNSC
Ala Shaikhkhalil MD
Robert Shulman MD
JoAnna Siciliano RD
Jason Silverman MD, MSc, FRCPC, FAAP
Amber Smith, MBA, RD, CD
Jonathan Spergel MD, PhD
Dana Steien MD
Jennifer Strole MD
Sana Syed MD
Saurabh Talathi MD
Sarah Taylor MD
Tsega Temtem MD
Sarah Thibodeau RD, LDN, CNSC
Carmyn Thompson RD, LDN, CSP
Justine Turner MD, PhD
Charles Vanderpool MD, CNSC
Miranda Van Tilburg PhD
Robert Venick MD
Sarah Vermilyea RD, MS, CSP, LD, CNS
Miriam Vos MD, MPA
Joshua Wechsler MD
Andrew Wehrman MD
Rebecca Wilhelm
Jennifer Woo Baidal MD, MPH
Dong Xi MD
Nicole Zahka PhD
Yuhua Zheng MD



Funding Research

The North American Society for Pediatric Gastroenterology, Hepatology, and Nutrition (NASPGHAN) and the NASPGHAN Foundation are dedicated to:

- Advancing medical knowledge and technology
- Caring for patients with digestive disorders
- Educating physicians and the public
- Supporting affected children and their families

While broad in nature, these activities are integrally linked and rely on research for their advancement. In this context, NASPGHAN and the NASPGHAN Foundation have been sources of research support and leading partners with government, industry, and relevant agencies to help fund research initiatives.

There have been numerous scientific advancements in the field of medicine, namely from molecular, clinical, and health economic perspectives. We now have a greater understanding of the molecular and genetic mechanisms of health and disease. In addition, there has been a growing emphasis on translating scientific discoveries to patient care, quality improvement, and improved use of healthcare resources.

Grants and Awards

The future of our subspecialty rests with its trainees and young professionals. A pipeline of research talent into NASPGHAN will ensure the long-term vitality of our profession as practitioners of state-of-the-art, evidence-based medicine.

The Foundation has awarded more than 87 investigator-initiated grants totaling \$10,000,000 to NASPGHAN members with an outstanding track record of converting these awards into NIH and CIHR-funded grants.

In addition, thanks largely to two generous endowments by Takeda Pharmaceuticals America, Inc. and AstraZeneca, the NASPGHAN Foundation has been able to expand its grant portfolio to include awards to more senior investigators.

Crohn's & Colitis Foundation/NASPGHAN Foundation IBD Young Investigator Award

This three-year grant, in partnership with the NASPGHAN Foundation and the Crohn's & Colitis Foundation, is available to research fellows or junior faculty. Applications must propose original clinical, translational, epidemiological, or basic scientific research related to pediatric inflammatory bowel disease.

2018

Jon Hubbard, MD, PhD

*Boston Children's Hospital, Boston, MA
Mechanisms of FCM-Mediated Immune Regulation*

2019

Jodie Ouahed, MD, MMSc, FRCPC, FAAP

*Boston Children's Hospital, Boston, MA
Role of Interferon Lambda Signaling in Mucosal Homeostasis and Infantile-Onset Inflammatory Bowel Disease*

NASPGHAN Foundation George Ferry Young Investigator Development Award

This two-year grant is available to junior faculty to support research activities that have the potential for evolution to an independent research career in pediatric gastroenterology, hepatology or nutrition. Monies are awarded in support of a meritorious research project in the clinical or basic sciences to study the diseases of the gastrointestinal tract, liver or pancreas and nutritional disorders in children.

2018

Sarah Taylor, MD

*Ann & Robert H Lurie Children's Hospital, Chicago, IL
Macrophage Regulation of Immune Pathogenesis of Biliary Atresia*

2019

Dominique Bailey, MD

*Columbia University Medical Center, New York, NY
The Role of Tenascin-C in Pediatric Eosinophilic Esophagitis*

NASPGHAN Foundation/Nestlé Nutrition Research Young Investigator Development Award

This two-year grant is available to junior faculty to support research activities that have the potential for evolution to an independent research career in pediatric gastroenterology, hepatology or nutrition. This grant, generously supported by Nestlé Nutrition Institute, is awarded to support meritorious basic or clinical research project relating to nutrition in infancy, childhood or adolescence.

2018

Samir Softic, MD

*Boston Children's Hospital, Boston, MA
Sugar Metabolism in Fatty Liver Disease*

2019

Zachary Sellers, MD, PhD

*Stanford University, Palo Alto, CA
Linacotide as a Novel Therapy to Improve Nutritional Insufficiency in Cystic Fibrosis*

Supported by an educational grant from Nestlé Nutrition Institute

NASPGHAN Foundation Fellow to Faculty Transition Award in Inflammatory Bowel Diseases

The NASPGHAN Foundation Fellow to Faculty Transition Program was designed to provide additional IBD training and research experience to recent graduates of pediatric gastroenterology fellowship programs.

2018

Hongtao (Alex) Wang, MD, PhD

*Texas Children's Hospital, Houston, TX
Targeting Epithelial Steroidogenesis to Treat Inflammatory Bowel Disease*

NASPGHAN Foundation Mid-Level Career Development Award

This mid-level career development award is for NASPGHAN members pursuing research in pediatric gastroenterology, hepatology and nutrition and are at a mid-level in their career. Mid-level is defined as a faculty member who has held a faculty appointment for at least 6 years at the time of the application, but has not yet reached professor level. The two-year grant funds the advancement of research careers for applicants with significant promise in their mid-years as faculty.

2018

Ajay Gulati, MD

*University of North Carolina Chapel Hill, Chapel Hill, NC
Identifying Microbiota-Driven Pathways to Modulate Paneth Cell Function*

2019

Janet Wojcicki, PhD

*UCSF Children's Hospital, San Francisco, CA
Leukocyte Telomere Length as a Predictor of NASH and NASH Progression*

The NASPGHAN Foundation/Takeda Pharmaceuticals America, Inc. Research Innovation Award

This two-year grant funds innovative, high-impact research in pediatric gastroenterology, hepatology and nutrition. The intent of this research award is to stimulate scientific inquiry in an area that is exceptionally innovative and has the potential to impact the field in a highly novel manner.

2019

Joshua Wechsler, MD

*Ann & Robert H. Lurie Children's Hospital of Chicago, Chicago, IL
Deciphering Mechanisms of Mast Cell Activation and Barrier Dysfunction in Eosinophilic Esophagitis*

*Supported by an educational grant from
Takeda Pharmaceuticals America, Inc.*

NASPGHAN Foundation Innovations in Clinical Care Grant

The aim of this grant is to encourage and support the development of innovative approaches to optimize the quality of care and health care delivery to children with digestive diseases by the clinically focused pediatric gastroenterologist. The Foundation awards up to two grants for a one-year period. Selection criteria include potential impact of the project on patient care and the applicability of the project to the general NASPGHAN community.

2018

Jacob Robson, MD

*University of Utah, Salt Lake City, UT
Side-Opening Biopsy Forceps to Improve Subepithelial Tissue Yield and Assessment of Esophageal Fibrosis In Children with Eosinophilic Esophagitis*

Debora Duro, MD, MS

*Broward Health, Chris Evert Hospital, Fort Lauderdale, FL
The Influence of Exercise on Body Composition and Patient Outcomes in a Pediatric Multidisciplinary Obesity Clinic*

2019

Amanda Lee, MD

*Vanderbilt University Medical Center, Nashville, TN
Interactive Electronic Learning Modules for Pediatrician, Trainee, and Patient Education in Gastrointestinal Disorders*

Sharon Tam, MD

*Children's Hospital Los Angeles, Los Angeles, CA
Standardizing GI Biopsy Practices in Pediatric Endoscopy*

NASPGHAN Foundation/QOL Medical, LLC Research Award for the Study of Disorders Associated with Carbohydrate Malabsorption

This new award provides funding for studies focused on disorders of carbohydrate (CHO) maldigestion/malabsorption in children. Relevant conditions include, but are not limited to,

lactose intolerance, congenital sucrose-isomaltase deficiency, diseases leading to intestinal epithelial cell dysfunction, SIBO, or inflammatory conditions affecting CHO absorption.

2019

Nadia Ameen, MD

Yale University, New Haven, CT
Mechanisms of Carbohydrate Malabsorption in Microvillus Inclusion Disease

Supported by an educational grant from QOL Medical, LLC.

NASPGHAN Foundation/CPNP Nutrition Research Grant

This one-year grant is available to pediatric dietitians to support research activities that have the potential to advance the nutrition care of patients and families of children with nutritional disorders.

2019

Catherine Karls, MS, RD, CD, CNSC

Children's Hospital of Wisconsin, Milwaukee, WI
Comparison of a New and Novel Nutrition Screening Tool with a Previously Validated Tool to Determine Nutrition Risk in Pediatric Patients with Scoliosis Undergoing Elective Spine Fusion or Growth

Jennifer Smith, MS, RDN, LD

Nationwide Children's Hospital, Columbus, OH
A Single-Center Quality Improvement-Based Initiative for the Diagnosis and Treatment of Iron Deficiency and Iron Deficiency Anemia in Children

Supported by an educational grant from QOL Medical, LLC.

NASPGHAN Foundation/APGNN Susan Moyer Nursing Research Grant

This one-year grant is available to pediatric gastroenterology, nutrition and hepatology nurses to support research activities that have the potential to advance nursing care of patients and families of children with gastrointestinal, hepatobiliary, pancreatic or nutritional disorders. Monies are awarded in support of a meritorious research projects to study the nursing care of families and children with pediatric gastrointestinal, hepatobiliary, pancreatic or nutritional disorders.

2018

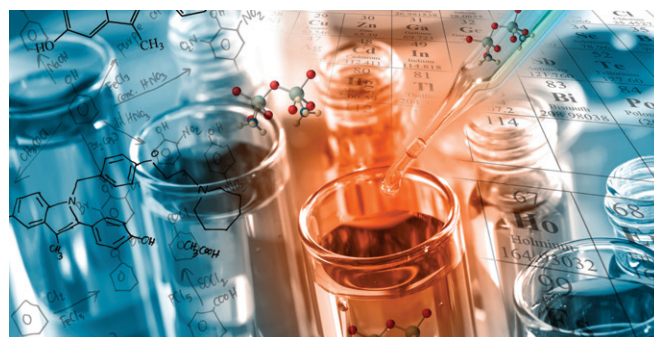
Kerri Fournier, BSN

Boston Children's Hospital, Boston, MA
Administration Delivery Practices and Characteristics of Pediatric/Young Adult Gastroenterology Patients Receiving Infliximab Infusion Therapy in an Ambulatory Infusion Clinic

2019

Karie Robinson, MSN

Children's Mercy Hospital, Kansas City, MO
The Clinical Feasibility and Correlation of Bench Step Testing-Estimated Maximal Oxygen Uptake with Markers of Fatty Liver Disease in Adolescents



NASPGHAN Foundation/Abbott Nutrition Advanced Fellowship Training in Pediatric Nutrition

The NASPGHAN Foundation/Abbott Nutrition Advanced Fellowship in Nutrition supports one year of advanced training in pediatric nutrition. The fellowship must include a well-defined clinical experience as well as a focused research project. The primary objective of the fellowship is to catalyze and increase the number of highly-trained, expert nutrition clinicians, educators and scientists among the membership of NASPGHAN, as a means to improve service to our patients and the public.

2018

Bridget Dowd, MD

Children's Hospital of Philadelphia, Philadelphia, PA
A Placebo Controlled Exploratory Study to Identify Biomarkers in Food Tolerance

2019

Sarah Orkin, MD

Cincinnati Children's Hospital Medical Center, Cincinnati, OH
Food Insecurity and Non-alcoholic Liver Disease Severity

Supported by an educational grant from Abbott Nutrition.

NASPGHAN Foundation/AstraZeneca Research Award for Disorders of the Upper Gastrointestinal Tract

This grant provides funding for studies focused on the epidemiology, pathogenesis, natural history, genetics, diagnosis and management of peptic disorders and other diseases of the upper gastrointestinal tract in children. Diseases that are relevant to this grant include, but are not limited to gastroesophageal reflux, reflux esophagitis, eosinophilic (allergic) esophagitis, and motility disorders of the upper gastrointestinal tract, Helicobacter pylori infection with or without ulceration, non-ulcer dyspepsia, and non-bacterial ulcer diseases.

2018

Bruno Chumpitazi, MD

Texas Children's Hospital, Houston, TX
Advancing Nutritional Science for Children with Functional Dyspepsia

Supported by an educational grant from AstraZeneca

Special Recognition Awards

The NASPGHAN Foundation is fortunate to be the beneficiary of donations to acknowledge, honor, and commemorate three individuals' lives and work.

Gerard B. Odell Award

Dr. Odell, a professor of pediatrics at the Johns Hopkins School of Medicine, was a pediatric liver specialist. Later in his career, he established the pediatric gastroenterology division at the University of Wisconsin. He was a passionate scientist and his research on bilirubin metabolism and hepatobiliary disorders was a point of immense career pride. The award was developed to promote research and excellence in hepatology.

2018

Dennis D. Black, MD

*University of Tennessee Health Science Center, Memphis, TN
Results of the WUPPSC Study: Prospective Multicenter
Withdrawal of Ursodeoxycholic Acid in Pediatric Primary
Sclerosing Cholangitis (PSC)*

2019

Amanda Ricciuto, MD

*The Hospital for Sick Children, Toronto, ON
MRCP Severity Predicts Disease Outcomes in Pediatric Primary
Sclerosing Cholangitis: A Reliability and Validity Study*

Amin Tjota Award for the Outstanding Abstract in Pancreatic Research Prize

This award honors the memory of the late Dr. Amin Tjota and has been developed to promote the pursuit of research related to pancreatic disorders in children.

2019

Sohail Husain, MD

*Stanford University, Palo Alto, CA
The Drug Complication of Pancreatic Injury with Asparaginase is
Related to Pancreatic Levels of the Endogenous Counteracting
Enzyme Asparagine Synthetase and Intra-Pancreatic Nutrient
Stress*



Dennis D. Black, MD



Amanda Ricciuto, MD



Sohail Husain, MD

Richard J. Grand and John B. Watkins Research Prize for Excellence in Pediatric Gastroenterology, Hepatology and Nutrition

Drs. Grand and Watkins were pioneers in the field of pediatric gastroenterology and helped define our field as we know it today. Dr. Grand is probably best known for his pivotal contributions to the field of pediatric inflammatory bowel diseases, but he was also incredibly active in such diverse areas as studying the developmental biology of the GI tract, defining the molecular regulation of disaccharidase production, and numerous aspects of pediatric nutrition.

Like Dr. Grand, Dr. Watkins was a pioneer in broad areas of pediatric GI/ hepatology and nutrition; from understanding lipid digestion and absorption, examining the pathogenesis of neonatal cholestasis, to defining and optimizing the nutritional needs of premature infants. Drs. Grand and Watkins worked together to build one of the earliest “full service” GI Divisions in the country.

The award was developed to promote research and excellence in pediatric gastroenterology, hepatology and nutrition

2018

Diana Montoya Melo, MD

University of Texas Southwestern, Dallas, TX

EoE Esophageal Epithelial Cells Induce TH2 Polarizing Dendritic Cells

2019

Hongtao Wang MD, PhD

Baylor College of Medicine, Houston, TX

Nuclear Receptor LRH-1 is a Therapeutic Target for Inflammatory Bowel Disease (IBD)

The William Balistreri Lectureship

The William Balistreri Lectureship supports a lecture featuring a research and clinical expert who presents cutting edge topics in the fields of gastroenterology, hepatology, nutrition, and pancreatic diseases. The lecture is given during the Plenary Session at the Annual Meeting.

2018

Takanori Takebe, MD

Cincinnati Children's Hospital Medical Center, Cincinnati, OH

The Promise of Future Health Impact on Liver Organoids

2019

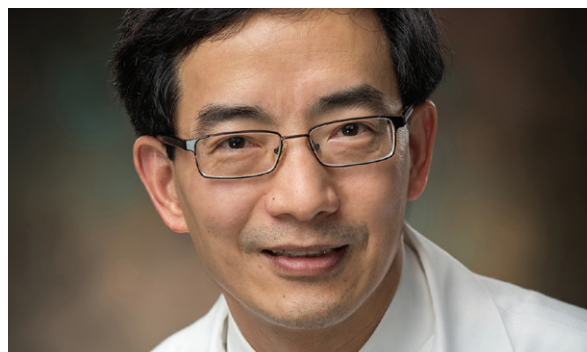
Jack Gilbert, PhD

The University of California San Diego School of Medicine, San Diego, CA

Getting More Mileage out of our Magnificent Microbiome



Diana Montoya Melo, MD



Hongtao Wang MD, PhD



Takanori Takebe, MD



Jack Gilbert, PhD

Teri Li Award in Education

The Teri Li Award recognizes novel or extensive education efforts by junior faculty in NASPGHAN. The award is named in honor of Dr. B Li's spouse, Teri, who was passionately dedicated to quality education all of her life.

2018

Diana Lerner, MD

Medical College of Wisconsin, Milwaukee, WI

2019

Arvind Srinath, MD, MS

Children's Hospital of Pittsburgh at UPMC, Pittsburgh, PA

The Cyclic Vomiting Syndrome Association (CVSA) Young Investigator Prize in Functional GI Disorders in honor of B Li

This award is given to a young investigator submitting an outstanding scientific abstract focusing on basic science, clinical investigation or outcomes research in in the following conditions: Cyclic vomiting syndrome, aerophagia, rumination syndrome, functional dyspepsia, irritable bowel syndrome, or functional abdominal pain.

2019

Zeyad Abdulkader, MD

Nationwide Children's Hospital, Columbus OH

Predictors of Hospitalization for Children with Cyclic Vomiting Syndrome

2018-2019 Foundation Supporters

Abbott Nutrition
AbbVie, Inc.
Allergan Foundation
Alexion Pharmaceuticals, Inc.
AstraZeneca
Crohn's & Colitis Foundation
Cyclic Vomiting Syndrome Association
Nestlé
Nutricia North America, Inc.
QOL Medical, LLC.
Takeda Pharmaceuticals America, Inc.



Diana Lerner, MD



Arvind Srinath, MD, MS



Zeyad Abdulkader, MD

Testimonials



"I am very grateful to have received the NASPGHAN Mid-Level Career Development Award. That award provided my lab with the resources to develop new skills for innovative genomic analyses of experimental liver disease. We are currently applying those tools to a number of liver disease models and thereby gaining new insights into disease pathogenesis. We are optimistic this work will lead to improved prognostic and therapeutic tools. As an added benefit, the resources supported by this award were used in studies conducted by, and thereby enabled the development of a pediatric GI fellow who is now junior faculty (and a rising star). I want to close by reiterating by deep gratitude to the NASPGHAN foundation for this support."

David A. Rudnick, MD, PhD
Associate Professor, Department of Pediatrics,
Department of Developmental Biology
Washington University School of Medicine
St. Louis MO, 63110



"I am extremely grateful for the support from the NASPGHAN Foundation through receipt of the AstraZeneca Research Award for Disorders of the Upper GI Tract. With the funds from this award we identified a unique mechanism by which *Helicobacter pylori* creates an intracellular niche to evade host responses and antibiotic eradication. Armed with the knowledge of this mechanism, we subsequently identified a novel non-antibiotic therapeutic target that eliminates the intracellular niche and kills *H. pylori*. The results from these studies were published in Nature Microbiology in 2019. The completion of this work would not have been possible without the support from the foundation. These findings will have a long lasting impact on our future research aimed at translating this discovery to the clinic."

Nicola Jones MD, PhD
Division of Gastroenterology, Hepatology, and Nutrition,
The Hospital for Sick Children, Departments of Paediatrics and
Physiology, University of Toronto, Toronto, Ontario, Canada
President, Canadian Association of Gastroenterology



"I am forever grateful to the NASPGHAN Foundation for its support through the George Ferry Young Investigator Award. It provided critical protected time, resources and career development to allow for successful next steps in NIH funding. Perhaps most importantly, it emboldened me to continue in my research career."

Calies Menard-Katcher, MD, MSCS
Associate Professor of Pediatrics
Associate Fellowship Program Director
Division of Gastroenterology Hepatology and Nutrition
Department of Pediatrics
University of Colorado School of Medicine
Gastrointestinal Eosinophilic Diseases Program
Digestive Health Institute
Children's Hospital Colorado



"All the NASPGHAN Foundation awards are so helpful to researchers in the field of Pediatric GI and Hepatology but the the Mid-level Development Award came at just the right time. It allowed my lab to continue our work and gave us extra time to get an R01."

Edwin F. de Zoeten M.D., Ph.D.
Co-Director- Inflammatory Bowel Disease Center
Children's Hospital Colorado
Associate Professor of Pediatrics
University of Colorado School of Medicine

NASPGHAN Foundation Member Donations

November 2018 – September 2019

Champion

(\$1000 and up)

Jane Balint MD
Ellen and John Barnard MD
Carlo Di Lorenzo MD
Douglas Fishman MD, FASGE
Benjamin Gold MD
Susan Henning PhD
James Heubi MD
Kahn Celiac Disease
Foundation Fund
Neal LeLeiko MD, PhD
William Sloane Jelin Foundation
B Li MD
Jenifer Lightdale MD, MPH
Mark Lowe MD, PhD
Petar Mamula MD
Karen Murray MD
Philip Sherman MD, FRCPC
James Squires MD, MS
Aliye Uc MD
Judith and Menno Verhave MD
Barry Wershil MD
Melawati Yuwono MD
Jody and Melvin Heyman MD, MPH

Benefactor

(\$500-\$999)

Sharifa Ali Alghamdi MD
Elizabeth Allen MD
Dennis Black MD
Mitchell B Cohen MD
Valeria Cohran MD
Alejandro Flores MD
Praveen Goday MBBS
Janet Harnsberger MD
Jay Hochman MD
Jeannie Huang MD, MPH
Rohit Kohli MBBS, MS
Mike Leonis MD, PhD
Susan Maisel, MD
Marjorie McCracken MD, PhD
Iona Monteiro MD
John Rosen MD
Shehzad Saeed MD
Ann Scheimann MD, MBA
Miriam Vos MD, MPA
Michael Wilsey MD

Partner

(\$200-\$499)

Jeffrey Brown MD
Sheyla Calderon MD
Richard B Colletti MD
Laurie Conklin MD

Harold Conrad MD
Joseph Croffie MD
Molly Dienhart MD
Jennifer Dotson MD
Victor Fox MD
George Fuchs MD
Melanie Greifer MD
Van Hubbard MD
Daniel S. Kamin MD
Jeffrey Lewis MD
Cara Mack MD
Daniel Mallon MD
Randolph McConnie MD
Philip McDonald MD
Vincent Mukkada MD
Mark Naddaf MD
Michael Narkewicz MD
Network for Good
Molly O'Gorman MD
Simon Rabinowitz MD
Jyoti Ramakrishna MD
Norberto Rodriguez-Baez MD
Michael Rosen MD
Matthew Ryan MD
Miguel Saps MD
Richard Schreiber MD
Timothy Sentongo MD
Ala Shaikhkhalil MD
Harohalli Shashidhar, MD
Lesley Jacqueline Smith MD
Judith Splawski MD
William Sloane Jelin Foundation
Justine Turner MD, PhD
Alexander Weymann, MD
Harland Winter MD

Associate

(\$100 - \$199)

Estella Alonso MD
Christine Bales MD
Michael Bates MD
Eric Benchimol MD
Millie Boettcher MSH, CPNP, CNSN
Conrad Cole MD
Robert Dahms
Nirav Desai MD
Joan DiPalma MD
Looi Ee MD
Jeffrey Fahl MD
Fidelity Charitable Trust
Ryan Fischer MD
Glenn Furuta MD
Amy Garcia MD
Cheryl Garipey MD
Juan Gregory MD
David Gremse MD
Robert Heukeroth MD

Ivor Hill MD, MB, ChB
Robert Issenman MD
Stacy Kahn MD
Marsha Kay MD
Janice Kelly Dones MD
Michael Konikoff MD
Benjamin Kuhn MD
Donald Laney MD
Stanley Lau MD
Ian Leibowitz MD
Joseph Levy MD
Kathleen Loomes MD
Adam Mezzoff MD
Elizabeth Miletic MD
Patrika Montricul MD
William Mow MD
Prathiba Nanjundiah MD
Samuel Nurko MD
Anthony Otley MD
David Piccoli MD
Michelle Pietzak MD
Philip Rosenthal MD, FAAP
Joel Rosh MD
David Rudnick MD
Steven Schwarz MD, FAAP,
FACN, AGAF
Mitchell Shub MD
Arnold Silverman MD
Lawrence Sorkin MD
Mark Tsou MD
Ritu Verma MD
Frederick Watanabe MD
Claire Wilson MD

Friend

(\$35 - \$99)

Sheeja Abraham MD
Chandran Alexander MD
Nikki Allmendinger MD
Rathra Amarnath MD
Jae-Koo An MD
Dhandapani Ashok MD
Ahmet Aybar MD
Sonia Ballal MD
Ashis Barad MD
Lee Bass MD
Elana Bern MD
Jorge Bezerra MD
Anas Bitar MD
Linda Book MD
Athos Bousvaros MD, MPH
Brendan Boyle MD
Catherine Brigman MD
Annemarie Broderick MD
David Brumbaugh MD
Tyler Burpee MD
Nick CaJacob MD

Jorge Chavez Saenz MD
Yen-Ping Chen MD
Maria Clavell MD
Deborah Cloney MD
Richard Couper MD
Olivier Courbette MD
Jennifer Crouse MS, RD, CD, CDE
Eileen Crowley MD
Saied Dallalzadeh MD
Patrick Daugherty MD
Arthur de Lorimier MD
Vera De Matos MD
Gayle Diamond MD
Roselyn Diaz MD
Amy Donegan RN, MS, APN
Jill Dorsey MD
Eric Drouin MD
Christopher Duggan MD
Debora Duro MD
Larry Eisenberg MD
Udeme Ekong MD
Jonah Essers MD
Tom Ewald MD
Danielle Farraguti MD
Drew Feranchak MD
Laurie Fishman MD
Tom Flass MD
John Fortunato MD
Joel Friedlander MD
Anna Furr MD
Esperanza Garcia-Alvarez MD
Manuel Garcia-Careaga MD
Donald George MD
Mark Glassman MD
Elizabeth Gleghorn MD
Monique Goldschmidt MD
Regino Gonzalez-Peralta MD
Kerri Gosselin MD
Aakash Goyal MD
Maria Greene MD
Colleen Hadigan MD
Michael Haight MD
Elizabeth Hait MD
Michael Hart MD
Lara Hart MD
Terry Hatch MD
Hector Hernandez MD
Pamela Hofley MD
Sohail Husain MD
Christopher Jolley MD
Abha Kaistha MD
Mitchell Katz MD
Kevin Kelly MD
Judith Kelsen MD
Drew Kelts MD
Sandra Kim MD
Barbara Kirschner MD

Samuel Kocoshis MD
 Katja Kovacic MD
 Diana Lerner MD
 Steven Lichtman MD
 Simon Ling MD
 Anthony Loizides MD
 Oscar Loret De Mola MD
 Otto Louis-Jacques MD
 Mary Allyson Lowry MD
 Wieslaw Machnowski MD
 David Mack MD
 Eric Maller MD
 Yvonne McFarlane Ferreira MD
 Calies Menard-Katcher MD
 Alexander Miethke MD
 Douglas Mogul MD
 Parvathi Mohan MD
 Sean Moore MD
 Jonathan Moses MD
 Elaine Moustafellos MD
 Alisa Muniz Crim MD
 Rajeev Nagpal MD
 Shweta Namjoshi MD
 James Noel MD
 Robert Noel MD
 Michael Novielli MD
 Paula Ordonez MD
 Hilary Perr MD
 Randi Pleskow MD
 Kathleen and Keith Post
 Carol Potter MD
 Roy Proujansky MD
 Antonio Quiros MD
 Jonathan Ramprasad MD
 Bram Raphael MD
 Anthony Repucci MD
 Marc Rhoads MD
 Amanda Ricciuto MD
 Brian Riedel MD
 Albert Marshall Ross MD
 Charis Faye Ross MD
 Robert Rothbaum MD
 Paul Rufo MD, MMSC
 Nasim Sabery MD
 Meghana Sathe MD
 Wael Sayej MD
 Adrienne Scheich MD
 Sally Schwartz BS, RD, CSP, LPN
 Sarah Jane Schwarzenberg MD
 Ameesh Shah MD
 Maryam Shambayati MD
 Lisa Sharda MA, RD, IBL
 Harohalli Shashidhar MD
 Jocelyn Silvester MD, PhD
 Edwin Simpser MD
 Mamata Sivagnanam MD
 Christopher Smith MD
 Jason Soden MD
 Ronald Sokol MD
 Jason Spence MD
 John Stephens MD
 Jennifer Strople MD
 Carolyn Sullivan MD

Francisco Sylvester MD
 Phil Tarr MD
 Mary Elizabeth Tessier MD
 Kerry Thek MD
 John Thompson MD
 Erena Treskova MD
 David Tuchman MD
 Miranda van Tilburg PhD
 Jorge Vargas MD
 Sarah Vermilyea RD, MS, CSP, LD, CNS
 Christine Waasdorp Hurtado MD
 Alex Wang MD
 Alexander Weymann MD
 Dana Williams MD
 Robert Williams MD
 Lauren Willis MD
 Desalegn Yacob MD
 Chunyue Yin MD
 Bella Zeisher, MD
 Lori Zimmerman MD

Teri Li Fund

Dennis Black MD
 Jeffrey Brown MD
 Mitchell Cohen MD
 Richard B Colletti MD
 Gayle Diamond MD
 Rosalyn Diaz MD
 Looi Ee MD
 Drew Feranchak MD
 Laurie Fishman MD
 Alejandro Flores MD
 Glenn Furuta MD
 Amy Garcia MD
 Cheryl Gariepy MD
 Juan Gregory MD
 David Gremse MD
 Jody and Melvin Heyman MD
 Daniel Kamin MD
 Robert Isenman MD
 Janice Kelly Dones MD
 Rohit Kohli MBBS, MS
 Katja Kovacic MD
 Stanley Lau MD
 B Li MD
 Daniel Mallon MD
 Petar Mamula MD
 Philip McDonald MD
 Adam Mezoff MD
 Iona Montiero MD
 Patrika Montricul MD
 Elaine Moustafellos MD
 William Mow MD
 Hilary Perr MD
 Michelle Pietzak MD
 Simon Rabinowitz MD
 Norberto Rodriguez-Baez MD
 Robert Rothbaum MD
 Sally Schwartz BS, RD, CSP, LPN
 Timothy Sentongo MD
 Ameesh Shah MD
 Mary Sharrett MD
 Mitchell Shub MD

Herohalli Shashidhar MD
 Lesley Jacqueline Smith MD
 James Squires MD, MS
 Justine Turner MD
 Sarah Vermilyea RD, MS, CSP, LD, CNS
 Christine Waasdorp Hurtado MD
 Alexander Weymann MD
 Claire Wilson MD

William Balistreri Lectureship

Estella Alonso MD
 Christine Bales MD
 Michael Bates MD
 Dennis Black MD
 Linda Book MD
 Mitchell Cohen MD
 Richard B Colletti MD
 Saied Dallalzadeh MD
 Joan DiPalma MD
 Alejandro Flores MD
 Joel Friedlander MD
 Manuel Garcia-Careaga MD
 Michael Haight MD
 Susan Henning PhD
 Jody and Melvin Heyman MD
 Marsha Kay MD
 Samuel Kocoshis MD
 Michael Konikoff MD
 Benjamin Kuhn MD
 Donald Laney MD
 Stanley Lau MD
 Mike Leonis MD, PhD
 Joseph Levy MD
 Steven Lichtman MD
 Kathleen Loomes MD
 Wieslaw Machnowski MD
 Herohalli Shashidhar MD
 Susan Maisel MD
 Daniel Mallon MD
 Philip McDonald MD
 Adam Mezoff MD
 Alexander Miethke MD
 Elizabeth Miletic MD
 Douglas Mogul MD
 Iona Montiero MD
 Vincent Mukkada MD
 Mark Naddaf MD
 Prathiba Nanjundiah MD
 Simon Rabinowitz MD
 Norberto Rodriguez-Baez MD
 Joel Rosh MD
 Wael Sayej MD
 Richard Schreiber MD
 Philip Sherman MD, FRCPC
 Herohalli Shashidhar MD
 Arnold Silverman MD
 Lesley Jacqueline Smith MD
 Ronald Sokol MD
 James Squires MD
 Mark Tsou MD
 Frederick Watanabe MD
 Alexander Weymann MD

Michael Wilsey MD
 Chunyue Yin MD
 Bella Zeisler MD

Grand Watkins Fund

Sonia Ballal MD
 Elana Bern MD
 Dennis Black MD
 Athos Bousvaros MD, MPH
 Annemarie Broderick MD
 Richard B Colletti MD
 Joseph Croffie MD
 Nirav Desai MD
 Christopher Duggan MD
 Looi Ee MD
 Jonah Essers MD
 Jeffrey Fahl MD
 Douglas Fishman MD, FASGE
 Alejandro Flores MD
 Victor Fox MD
 Amy Garcia MD
 Mark Glassman MD
 Kerri Gosselin MD
 Colleen Hadigan MD
 Elizabeth Hait MD
 Susan Henning PhD
 Robert Heukeroth MD
 Jody and Melvin Heyman MD, MPH
 Van Hubbard MD
 Daniel Kamin MD
 Stacy Kahn MD
 Stanley Lau MD
 Anthony Loizides MD
 Susan Maisel MD
 Eric Maller MD
 Daniel Mallon MD
 Randolph McConnie MD
 Philip McDonald MD
 Parvathi Mohan MD
 Iona Montiero MD
 Patrika Montricul MD
 Vincent Mukkada MD
 Mark Naddaf MD
 Samuel Nurko MD
 David Piccoli MD
 Randi Pleskow MD
 Simon Rabinowitz MD
 Jyoti Ramakrishna MD
 Norberto Rodriguez-Baez MD
 David Rudnick MD
 Paul Rufo MD, MMSC
 Shehzad Saeed MD
 Adrienne Scheich MD
 Richard Schreiber MD
 Steven Schwarz MD
 Herohalli Shashidhar MD
 Jocelyn Silvester MD, PhD
 Lesley Jacqueline Smith MD
 James Squires MD, MS
 John Thompson MD
 David Tuchman MD
 Menno Verhave MD
 Lori Zimmerman MD

We've Made it Easy to Give Back

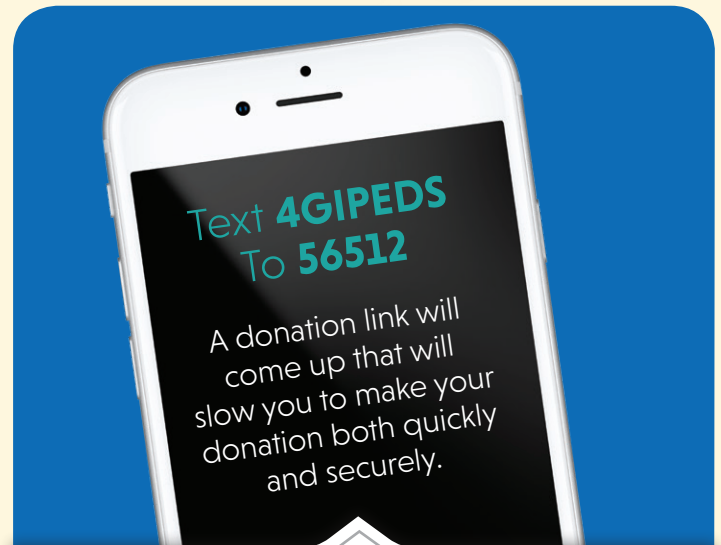
PLANNED GIVING



The **NASPGHAN Legacy Society** is open to all individuals who have named us in their long-term plans or created an endowment for our benefit. As a member of the Society, you will be recognized at the annual meeting now and in the future for your contribution to the stability and growth of NASPGHAN. You will receive yearly invitations to the VIP Donor Reception at the national meeting, and be identified by a special designation on your meeting badge. Whether your contribution is given with a directed purpose (determined by the donor), or provided to create an endowment intended for new initiatives and activities, it will receive yearly acknowledgement. Thus, by becoming a member of the Society, you will forever be recognized as a champion of your society and profession.

How it Works

- The NASPGHAN Foundation is the fund raising partner of NASPGHAN, so your gift should be directed to the Foundation.
- Name the NASPGHAN Foundation in your will, codicil to your will, living trust or as a beneficiary of your retirement plan, life insurance policy or donor-advised fund.
- Designate your gift for a particular purpose that is important to you, assign it to the legacy endowment, or allow us to use the gift where the need is greatest at the time it matures. In any case, you immediately become a member of the NASPGHAN Legacy Society.
- Indicate a set amount, a percentage or the remaining balance to benefit our mission



Mobile Giving

In 2019, the NASPGHAN Foundation launched a new and easy way to make donations via your cell phone. Just text 4GIPEDS to 56512. A donation link will come up that will allow you to make your donation both quickly and securely. Help us reach our goal of 100% member participation by making your pledge today!

A PARTNERSHIP FOR RESEARCH AND EDUCATION

"This is the members' foundation. It is meant and directed towards the needs and desires of the members to improve their research, their patient care or to improve the quality of life of their patients which is what it is really all about."





NASPGHAN Foundation Partners Program

The NASPGHAN Foundation has developed a Partners Program designed to increase dialogue about the science and practice of pediatric gastroenterology, hepatology and nutrition.

Partners work strategically with the NASPGHAN Foundation to advance pediatric patient care through research, education, policy, legislation, and emerging issues.

Annual meetings are held for all Partners to interact with NASPGHAN and Foundation leadership, share information, address topics of common interest, discuss trends and exchange views.

Thank You To Our **2019-2020** Corporate Partners

PLATINUM

Lilly
Nestlé

GOLD

Abbott Nutrition
Alexion Pharmaceuticals, Inc.
Allakos, Inc.
Celgene Corporation
Mead Johnson Nutrition
QOL Medical, LLC.
Takeda Pharmaceuticals America, Inc.

SILVER

AbbVie, Inc.
Albireo Pharma, Inc.
Innovative Health Solutions, Inc.
Medtronic
Mirum Pharmaceuticals, Inc.
Nutricia North America, Inc.
Olympus America, Inc.
Retrophin

NASPGHAN FOUNDATION

NASPGHAN Foundation National Office:

714 N. Bethlehem Pike, Suite 300, Ambler, PA 19002

Phone: 215-641-9800 • www.NASPGHANFoundation.org